

**Inside this issue:**

Letter to Members .....2  
 Conservation Achievements ....3  
 Community Outreach.....5  
 Financials.....6  
 Corporate Partners .....7  
 2004 Members.....8



## Conservation Emphasizes Water Quality

One of Catawba Lands Conservancy's most successful partnerships in 2004 was its work to assist the City of Mount Holly in receiving \$2.6 million from the Clean Water Management Trust Fund to conserve 223 acres and protect drinking water supplies.

“The Conservancy is very proud to be a partner in this effort and help secure funding for these important tracts,” said Executive Director Dave Cable. “The City of Mount Holly's foresight in wanting to protect its drinking water supply and provide outdoor recreation opportunities for its residents demonstrates outstanding leadership in

this region.”

The City applied to the Clean Water Management Trust Fund, a state fund that assists in water quality projects, and proposed an innovative collaboration. With this funding, the City of Mount Holly will purchase 39 acres on Mountain Island Lake from Duke Energy and 184 acres along Upper Lake Wylie from Crescent Resources.

These two tracts are critical in safeguarding Mountain Island Lake's excellent water quality and preventing further decline in Lake Wylie. Mountain Island Lake provides drinking water to Charlotte, Gastonia, Mount Holly and

other communities, while Lake Wylie is the drinking water supply for the City of Belmont. The total project cost is more than \$3.3 million, making this the largest land acquisition project Mount Holly has yet to undertake.

Following the acquisition of the properties, which total nearly three miles of water frontage, the City will have the opportunity to create additional recreational amenities in the area, such as greenways, interpretive signage and boardwalks over wet areas. The City also plans to include a park center, small boat access and a fishing pier.



**Volunteer  
of the Year  
award, page 3.**

**Mission**

Catawba Lands Conservancy protects the land, water and wildlife resources of the Southern Piedmont and Lower Catawba River Basin to sustain our region's health, natural beauty and ecological diversity now and in the future.

**5,839 acres protected!**

## Board of Directors

Budd D. Berro  
J. Frank Bragg Jr.\*  
Michael F. Clement  
Robert W. Elliot  
T. Thomas Gates  
John R. Hairr, III  
Kathryn S. Heath  
Thomas H. Howard, II  
Justin F. Little  
Charles W. McRee  
Charles J. Meakin, III\*\*  
Michael T. North  
William J. Price, V  
Haywood F. Rankin\*  
Teresa F. Rhyne  
David K. Smoots\*\*  
Michael A. Teague  
Mary C. Tribble  
Anne J. Udall  
P. Jean Woods  
Diane P. Wright

## Board of Advisors

McKay Belk  
Philip Blumenthal  
J. Frank Bragg Jr.  
Jeff Burton  
Edward Crutchfield  
Peggy Culbertson  
Frank Dowd, IV  
William Grigg

## Board of Counselors

Sen. Dan Clodfelter  
Dan Cottingham  
Sen. James Forrester  
Gerald Fox  
Sylvia Holmes  
James Kelligrew  
Vi Lyles  
Mary McDaniel  
Johan Newcombe  
Sen. Fountain Odom  
Ruth Samuelson  
Chase Saunders  
Wayne Weston  
James White

## Presidents Council

Richard O. Bierregaard Jr.  
J. Frank Bragg Jr.  
Ronald O. Bryant  
Richard K. Falknor  
Richard E. Rankin Jr.

## Conservancy Staff

Davis Cable, *Executive Director*  
Sonia Perillo, *Associate Director*  
Scott Bodien, *GIS Coordinator*  
Kenni Brooks, *Accountant*  
Erin Culbert, *Communications Director*  
Darlene Hassler Godwin, *Administrative Coordinator*  
Shannon Sharp, *Membership & Program Coordinator*  
Andrew Waters, *Land Protection Director*  
Sharon Wilson, *Land Stewardship Director*

\* term concluded in 2004

\*\* nominated for term in 2005



Dear Friends of the Conservancy:

While the land trust movement continued its evolution in 2004, the Conservancy, your land trust, experienced advances and successes that were much more dramatic. This past year brought leadership change with a new executive director, staff



growth, strong land protection momentum and strategic program review by the Board.

The Conservancy's primary successes in 2004 touched all program areas of land protection, stewardship, communication and development. Notable accomplishments included impressive land protection advances on the South Fork, memorable and successful events—including Parties for the Land, Steeplechase and Corporate Breakfasts—impressive membership and revenue increases, and further solidification of our stewardship program and related endowment.

The Conservancy's staff is now poised for future growth with the additions of Sharon Wilson as land stewardship director, Andrew Waters as land protection director and Darlene Godwin as administrative coordinator. In addition to their strong skill sets and enthusiasm, these individuals add to the existing staff's emotional commitment to fulfilling the Conservancy's mission. Lastly, as a complement to our staff growth, we have implemented several organizational changes that have made our team more energized, efficient and effective.

The Conservancy's Board, operating committees and staff began in 2004 a rigorous strategic review of our organization, touching on land protection priorities, capital sources for land conservation, conservation education and other issues. The strategic review will be completed in March 2005, providing for a more effective alignment of the Board, staff, volunteers and committees in reaching our clear mission to conserve our community's most sensitive lands.

Our gains and hard work in 2004 mean that we are poised for a fun and productive year ahead. Among the priorities for 2005 are:

- Aggressive and proactive land protection;
- Refinement of our site steward and monitoring programs to improve effectiveness and efficiency;
- Securing new sources of capital for land conservation; and
- Attainment of aggressive membership, revenue and community outreach goals.

The Conservancy has advanced to become one of the finest and most successful land trusts in the Southeast. Our advances are possible only because of the generous support of our members, landowners, volunteers and donors. Thank you for your many contributions! As always, we want to hear from you any time regarding ways the Conservancy can have a greater impact on our community.

Sincerely,

Davis J. Cable  
Executive Director

Budd D. Berro  
President, Board of Directors



# Protecting the Land

☛ **Properties conserved in 2004** permanently protect a wide range of conservation values, including working farms, rolling fields, forest land and land crucial to water quality protection. The Mountain Island Lake Property expands on previously protected property in the watershed that provides

8 percent of the state's population with its drinking water. The Bragg East conservation



easement expands conservation in the Ramah Creek watershed to more than 560 acres. The 18-acre Teague property in the Stanley Creek watershed is home to the oldest barn in Gaston County.

The Conservancy conserved more than 420 acres in the **South Fork Catawba River** watershed in 2004, increasing the total protection there to nearly 3,000 acres. Four of these projects were concentrated in the High Shoals area of Gaston County, including the Aderholdt Property, the Colt-Thornburg conservation easement, the David and Linda Hoyle conservation easement and the Friday Farm conservation easement—a century farm with a homestead dating back to the 1750s. Two other projects, the Riverbend Preserve Property and the Big Sky conservation easement, are located in Lincoln County directly across the river from property the Conservancy protected in 2000.

The Conservancy hired a **new land protection director**, Andrew Waters, to complete land protection projects and work with landowners who are considering the generous donation of their land.

The Conservancy is pleased to recognize volunteer Bill McMullen with the **Eugene O. Daniels Volunteer of the Year award** for nearly a decade of outstanding dedication and expertise. Bill donates hundreds of hours each year in legal assistance for land transactions by drafting conservation easements and providing legal counsel. Bill receives this award for his commitment to conservation and the land trust community.

The **Open Space Protection Collaborative**, a partnership among the Conservancy, four other land trusts and the Trust for Public Land, launched in 2004 to educate financial planners and their clients about conservation options. Thanks to support from the John S. and James L. Knight Foundation and the Foundation For The Carolinas, this program provides valuable expertise on tax incentives for conservation. Learn more at [www.openspaceprotection.org](http://www.openspaceprotection.org).

**2005 Goals:** The land protection team already has secured funding and/or commitments to complete seven conservation projects in 2005, totaling 654 acres. These properties will strengthen existing protection areas on the South Fork Catawba River, Stanley Creek and Mountain Island Lake.

In addition, the Lands Acquisition Committee will revisit the Conservancy's protection criteria to ensure the most strategic use of staff time and funding.

## Land Protection Achievements

- Aderholdt Property, 75 acres
- Big Sky CE, 41 acres
- Bragg East CE, 86 acres
- Colt-Thornburg CE, 43 acres
- David and Linda Hoyle CE, 32 acres
- Friday Farm CE, 167 acres
- Mountain Island Lake Property, 6 acres
- Riverbend Preserve Property, 68 acres
- Teague CE, 18 acres

*CE denotes a conservation easement.*

**Your support has protected 5,839 acres to date!**



# Stewarding the Land

As part of the Conservancy's long-term responsibility to steward its protected properties, we welcome the first **full-time land stewardship director**, Sharon Wilson, who oversees the regular monitoring of each property, addresses management issues and provides a resource for landowners who have conserved their land. Monitoring a property after it has been protected is an important component of the stewardship program.

The Conservancy worked diligently in 2004 on its first public access trail, which will open in spring 2005. The **South Fork River Rail Trail**, located just south of Lincolnton on the Paul and Agnes Rhyne Conservation Preserve, is part of the Conservancy's goal to provide outdoor recreation and education for members and the public. The project is an excellent example of cooperation among Catawba Lands Conservancy, private landowners, North Carolina Rails to Trails and the North Carolina Department of Environment and Natural Resources.

A grant from the U.S. Fish and Wildlife Service will support a **prairie restoration project** on Redlair Farm and Forest in Gaston County. Redlair is the Conservancy's largest protected property and is home to a growing population of the federally endangered Schweinitz's sunflower.

More than 20 volunteers have participated as a Conservancy salamander trapper this year, an ongoing project at Whitehall Nature Preserve and Ridge Road Nature Preserve.

Volunteers collect, count and release salamanders daily to provide data on their movement and population trends. Volunteers have contributed 380 hours to the Conservancy's stewardship program in the fourth quarter of 2004 alone.

The Conservancy monitored all protected properties in 2004 with the help of numerous volunteers. Each property is monitored at least annually to ensure the conservation values are being protected and to evaluate the potential for improvements.

**2005 Goals:** Volunteer site stewards are essential in the

long-term care of Conservancy-protected properties. The Conservancy secured and trained new site stewards for three properties and will continue strengthening this program. Another initiative in the coming year includes developing a comprehensive landowner outreach program. This

will keep current and future landowners updated on conservation issues, monitoring procedures and alternative sources of funding available for land protection and management. Please contact the Conservancy if you have any suggestions for these materials.



*Volunteer Kevin Lyon assists with monitoring Blue Bird Farm.*



*Work progresses nicely at the South Fork River Rail Trail, the Conservancy's first public access trail. The trail will open officially in spring 2005.*



# Engaging the Community

☞ A recent **survey of Mecklenburg County residents** conducted by UNC-Charlotte's Urban Institute indicated strong support for conserving land in the Charlotte region. The Conservancy participated in the Institute's annual fall survey to gauge community support for land conservation and awareness of the land trusts's work. Of 853 respondents in a random sample of Mecklenburg County, more than 86 percent said setting aside significant natural land now for the future is somewhat or highly important.

☞ The Conservancy hosted a variety of **events in 2004** to provide access to protected natural areas and raise funds for additional conservation. More than 200 people attended 10 hikes, and a record number of more than 300 people attended the Parties for the Land fall gala at the Duke Mansion. In addition to the corporate breakfast hosted annually in Charlotte, the Conservancy established one in Gastonia to build relationships with businesses in Gaston County.



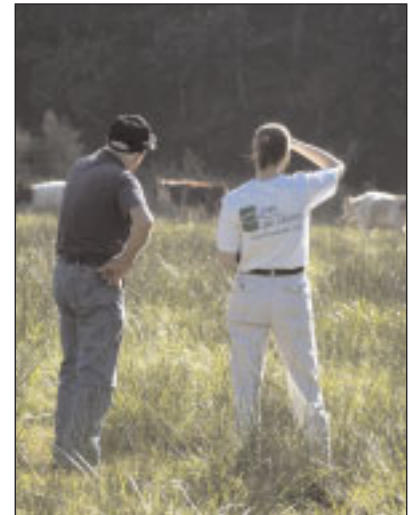
*The Adairs and Bryants enjoy an evening of music and auctions at Parties for the Land.*

☞ As part of its **fall membership drive**, the Conservancy staffed its first membership tables at Founder's Hall and the Wachovia Atrium in uptown Charlotte, complete with a banner overhanging College Street during the drive.

☞ The Conservancy was included in more than 42 articles in **print and broadcast media** in 2004. A **new web site** launched in September 2004 provides members and the public with up-to-date details on upcoming events and land

protection successes and allows the secure purchase of memberships and other special gifts. Visit the site today at [www.catawbalands.org](http://www.catawbalands.org).

☞ The Conservancy co-sponsored the **Rural Voices and Visions exhibit** at the Levine Museum of the New South to showcase the documentary project by Gabriel Cumming. The exhibit, on display now through April 2005, explores people's connection to land in four Piedmont communities.

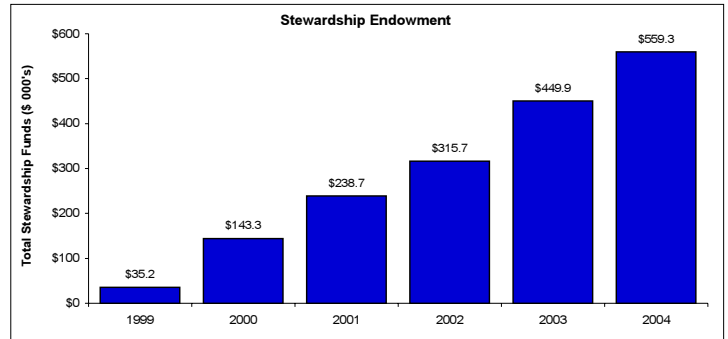
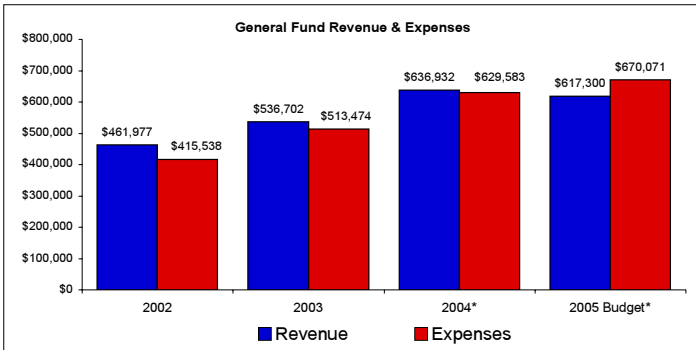


*Conservancy staff visits landowner Ed Friday to gather information for the newsletter.*

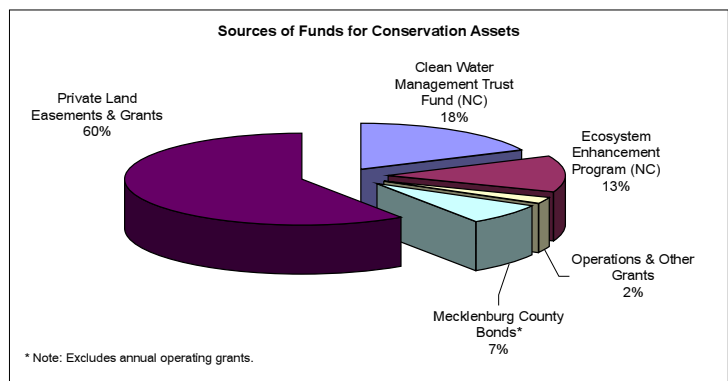
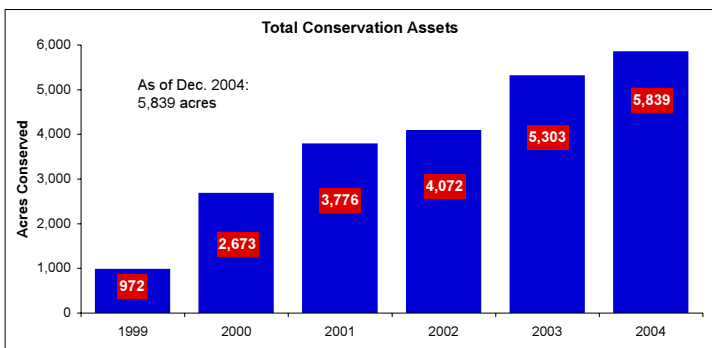
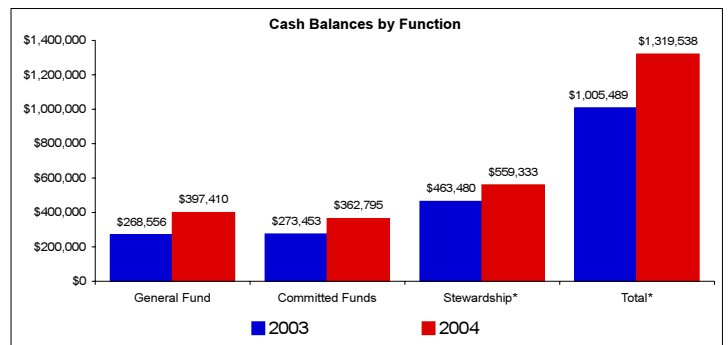
☞ **2005 Goals:** The Conservancy's development and marketing team will implement new strategies for leadership level donors, planned gifts and branding. You can expect a facelift of your newsletter and other materials, and please keep the Conservancy's Speakers Bureau in mind for your community group.



*The uptown membership banner at College and Fourth streets raises visibility and encourages new memberships.*



**\*Notes on General Fund Revenues & Expenses**  
 2004 - Excluded from revenue are the one-time proceeds from the Ketter estate. Revenue includes inter-fund transfer of stewardship funds. Expenses exclude paper loss on land sale.  
 2005 Budget - The Conservancy is preparing for aggressive land conservation growth in the upcoming years. In concert with a three-year strategic vision and planning effort during the last half of 2004, the Conservancy has been focused on internal capacity building that has included three new hires and a ramp-up in our increasingly important stewardship capacity. A critical and final phase of this effort calls for elevating the organization's development function to help meet the capital goals set for the period 2005-2007, including a capital campaign. Increasing the Conservancy's organizational horsepower has been thoughtfully completed with a long-term vision in mind. The increased capacity will conserve more land and provide superior stewardship program services. It will also mean that revenues will lag expenses in 2005 and into the first half of 2006.



**Incoming board member Dr. Charles J. Meakin III** has been involved with the Conservancy for several years with his family's donation of two conservation easements that protect 181 acres along the South Fork River. Dr. Meakin is an oncology physician at South East Radiation Oncology and resides in Gaston County with his wife Lindsay and two children. He serves on the boards of the U.S. National Whitewater Center, the Community Foundation of Gaston County, RBC Centura in Gastonia and is president of the Gaston County Medical Society. He has served as the medical director at the Gaston Memorial Hospital Cancer Center for 10 years and serves on the Conservancy's Gaston County Advisory Committee.

# 2004 Corporate Partners & Grants

## Corporate Partners

### Leadership: \$20,000+

**Bank of America**



MECKLENBURG COUNTY  
GOVERNMENT



### Steward: \$10,000+



### Sustainer: \$5,000+

CRESCENT RESOURCES  
LLC



Hexstream Media  
[www.hexstream.com](http://www.hexstream.com)

### Patron: \$2,500+

|                                 |                          |
|---------------------------------|--------------------------|
| Clariant Corporation            | LandDesign               |
| CPI Security                    | Lennar                   |
| Crosland                        | Rodgers Builders, Inc.   |
| Great Outdoor Provision Company | Shield Engineering, Inc. |
| Hearst Publishing               | Sonitrol                 |
|                                 | Summit Properties        |

### Sponsor: \$1,000+

|                                 |                           |
|---------------------------------|---------------------------|
| Charlotte Chamber of Commerce   | Myers & Chapman, Inc.     |
| The Charlotte Observer          | Norcom Development, Inc.  |
| Charlotte Pipe and Foundry      | Primax Properties         |
| E. C. Griffith Company          | Shelco                    |
| ESP Associates                  | T. B. Harris & Associates |
| Fankhauser Property Group, Inc. | Town of Mineral Springs   |
| Grant Thornton                  | Turnbull Sigmon Design    |
| HDR Engineering                 | WTVI                      |

### Friend: \$500+

|                               |                               |
|-------------------------------|-------------------------------|
| Adams Outdoor Advertising     | MDC Homes                     |
| Bunker Land Group             | Pharr Yarns                   |
| Cadwalader, Wickersham & Taft | Quantum Leap Strategies       |
| CMI Contracting               | Raftelis Financial            |
| Crowder Construction          | Rinehart & Associates         |
| Design Resource Group         | Smith Landscaping             |
| EarthMark, Inc.               | Southern Tree                 |
| Elliot-Warren                 | Team Bank of America          |
| Flynn-Heath Leadership        | Environmental Network         |
| Horizon Eye Care              | Tribble Creative Group        |
| Howard Construction Co.       | Willis Consulting Group, Inc. |
| McCullough England Associates |                               |

## Grants

|  |  |
|--|--|
| Akers Foundation                               | Earth Share of North Carolina            |
| Beaver Family Foundation                       | The Educational Foundation of America    |
| Blumenthal Foundation                          | Ellison Family Foundation                |
| John A. Cable Foundation                       | Foundation For The Carolinas             |
| Catawba River Basin Conservation Easement Fund | The Carrie E. & Lena V. Glenn Foundation |
| Clean Water Management Trust Fund              | Howe Foundation                          |
| Community Foundation of Gaston County          | John S. and James L. Knight Foundation   |
| Conservation Trust for North Carolina          | Trexler Foundation                       |
| The Dickinson Foundation                       | U.S. Fish and Wildlife Service           |
| Duke Energy Foundation                         | Withrow Foundation                       |

## Matching Companies

|  |                           |
|--|---------------------------|
| American International Group, Inc.                       | Duke Energy Foundation    |
| Bank of America  | HSBC                      |
| BellSouth  | IBM Corporation           |
| Charles Schwab Corp. Foundation                          | Microsoft Giving Campaign |
| Clariant Corporation                                     | Wachovia Foundation       |
| Community Foundation of Gaston County, Run for the Money |                           |

## In-kind Contributions

|                                 |                            |
|---------------------------------|----------------------------|
| ATCOM                           | Joseph Brymer Photography  |
| Bell Consulting Assoc., Inc.    | Nancy Pierce Photography   |
| Bragg Financial Advisors        | Mayes Wilson Associates    |
| Buckley, McMullen & Buie, P. A. | Robinson Bradshaw & Hinson |
| Heartwood Tree Service          | Shield Engineering, Inc.   |
| IBM Corporation                 | UNCC Urban Institute       |

**Incoming board member David Smoots** has co-chaired the Conservancy's Parties for the Land event the last two years and serves on the Development Committee. Smoots works in sales and marketing for Simonini Builders and received his bachelor's degree from the University of Georgia. He has been involved with a variety of other organizations in Charlotte, including the Young Affiliates of the Mint, the Blumenthal's Associate Producers Circle, the North Carolina Society to Prevent Blindness, Guardian ad Litem with the North Carolina Court System and Moving Poets Theater of Dance. He enjoys hunting, fishing, golf and coaching youth baseball.



# 2004 Members & Donors

## Guardian, \$10,000+

Ms. Susan R. Aderholdt  
Frank and Kathy Bragg  
Brian and Jane Rollins

## Legacy Sustainer, \$5,000+

Legacy Shares LLC

## Landscape Steward, \$2,500+

Thomas and Nancy Duncan  
Mike and Elizabeth North  
William Anderson and Karen  
Sennewald  
Kenneth and Dorothy Stancliff

## Heritage Benefactor, \$1,000+

Mark and Peggy Aspland  
Art and Chris Becker  
Dr. Andreas Bechtler  
Rob Bierregaard and Cathy Dolan  
Dave and Elizabeth Cable  
Gregory and Mary Lou Cagle  
Curtis and Dudley Carlson  
Mike and Kathryn Clement  
Robert and Peggy Culbertson  
Hal and Cynthia Curry  
Rick and Jeannie Falknor  
Peter and Anne Gilchrist  
John Grigg  
Herrick and Pam Hay  
Tom Webb and Kathryn Heath  
John and Maria Huson  
Jud and Deborah F. Little  
M633, INC  
Charles McBrayer Sasser  
Thomas and Robin McCoy  
Charles and Barbara McRee  
Dr. Charles and Lindsay Meakin  
Charles Peach and Pamela  
Pearson  
William and Carrington Price  
Richard and Sarah Park Rankin  
Mr. Rednecheck  
Robert Perkowski and Lisa  
Renstrom  
Steve and Katie Scruggs  
William and Emmaday Seymour  
Robert Bustle and Martha  
Sherman  
Dr. and Mrs. John B. Schug  
Mr. David K. Smoots  
Bonnie Stafford  
John and Mary S. Sumner Jr.  
Michael and Alice Teague  
Bill and Rita Vandiver  
Larry and Carla Vitez  
Debra M. Warren  
James and Genie White  
Mike Witt and Prince Dixon Witt  
T. Price and Margaret  
Zimmermann

## Piedmont Patron, \$500+

Herb and Diane Althouse  
Thomas and Pam Barnhardt  
James Blakeney

Benton and Alice Bragg  
Sharon Brown  
Ann Browning  
Nancy Cable  
Douglas and Laura Caldwell  
Dennis Rash and Betty Chafin-Rash  
Brad and Amanda Cherry  
William and Veronica Clark  
Will Close  
John Crosland  
Dr. William A. Current, DDS  
Rennie Cuthbertson  
Eugene and Marie Anne Daniels  
Michael and Valerie DeLong  
Walt and Trudy Donham  
Bo and Mollie Elliot  
Tom and Sherard Anne Gates  
Jerry and Kathryn Greenhoot  
James Griffith  
Tim and Kathleen Gunderman  
Peggy Harrington  
Amelia Hartman  
David and Alice Herald  
Ms. Nancy Howe  
Dr. Billy S. Howell, Jr.  
Norman and Rhonda Innes  
Junior Woman's Club of Charlotte  
Alan Kronovet  
Dick and Carolyn Lawson  
G.M. and Lee Lumpkin  
Marie-Claire Marroum  
David and Elizabeth Martin  
Mr. and Mrs. B. Frank Matthews, II  
Barry and Lee Ann McGinnis  
Mark Stanback and Nancy Popkin  
Arthur and Jennifer Newcombe  
Johan Newcombe  
John and Alison Nolting  
Printmasters Professional  
Printers, Inc.  
Haywood and Sabine Rankin  
Ms. Jane P. Shoemaker  
Mr. and Mrs. D. Harding Stowe  
Steven and Camilla Tracy  
John Trexler  
Mary Tribble  
Robert and Katherine Vest  
J. Byron and Nancy Walthall  
Jim B. Wolf

## Watershed Sponsor, \$250+

Francis Allen  
Stephen Bailey  
Alan and Eleanor Barnhardt  
Dalon and Ann Bass  
Tony and Amie Bell  
Budd and Leslie Berro  
Robert and Lois Binkley  
William Brandon and Pamela  
Fawcett-Brandon  
Phillips and Leslie Bragg  
John and Julie Bresnan  
Gary and Elizabeth Broome  
Pat Brugh  
Harry and Ruby Bryant  
Ronald and Nancy Bryant  
James Buchanan  
Laura Burke  
David and Lynn Caldwell  
William Cameron  
Carl Conrad

Carl and Katharine Cornell  
Mr. and Mrs. William Cornwell, Jr.  
CELF, Inc.  
Michael and Lora Connor  
Charles Dalton and Karen Watson  
Ms. Lisa Dula  
Michael and Claire Gwyn  
Doug Faris  
Arthur and Joleen Fields  
David and Christine Fogarty  
Lucius Gage  
Mrs. Sarah Belk Gambrell  
Frank and Sarah Gentry  
Bill and Sharon Green  
William and Elizabeth Green  
Sandra Grey  
John Hairr  
Joe Hamrick and Jean Woods  
John and Irina Hamrick  
George and Deb Hanna  
Tim and Robin Heafner  
Bill Hefner  
Mark J. Heitbrink and Ramona  
Sutter  
C. Dana and Nancy Hershey  
Thomas and Beth Hill  
Marc Houle  
Frank and Colleen Huber  
Ms. Barbara A. Huffman  
Sterling and Nancy Hutcheson  
Randy and Annie Ingram  
Fred and Janet Jackson  
Harry and Sandy Johnson  
Michael and Cynthia Jones  
Andy and Florence Kane  
William and Sue Keenan  
Mr. and Mrs. Charles Klapheke, III  
Laura Kratt  
Michael and Nancy Kucera  
Harry Lancaster  
Emily Landcaster  
Ned and Lauri Lipford  
Frances Long  
Mr. James L. Lytton  
Mara Malakoff  
Ed and Wendy Matthews  
Marvin and Linda McCaw  
Dr. Joseph B. McCoy, Jr.  
Gary and Karen McDougal  
Pete and Page McEachern  
Mrs. Civil McGowen  
Sally McMillan  
William and Kaye McMullen  
Matt and Teresa McQuide  
Kenneth and Ann Mead  
Ronald Melton and Katherine Boyd  
Rankin  
Richard and Dorothy Metzler  
James Neal  
Mr. Don E. Olmstead  
Adam and Sonia Perillo  
Richard Roberts and Teri Stern  
Roberts  
Tom and Cindy Rochester  
Evander and Mattie Rowell  
Mr. J. Fielding Scarborough  
John Schott  
Bill and Mary Staton  
Peter and Mary Stauble  
Dale and Kim Stewart  
Stonybrook Research Support  
Fitzhugh and Ann Stout  
Mr. Charlton K. Torrence, III

Brent and Leah Torstrick  
Jeffrey and Lynn Trenning  
James Henry Trexler  
Susan Turner  
United Oil of the Carolinas, Inc.  
Jim and Linda Wallace  
Mason and Nancy Wallace  
Mary Virginia White  
Mark and Barbara Wilfley  
Walter and Jean Wilkinson  
Robert Willetts  
Benjamin and Leah Williams  
Charles B. Williams  
June Winston  
Diane and James Wright

## Forest Preserver, \$100+

David Accipiter and Elaine  
Corvidae  
Don and Sue Adair  
Margery Adams  
R.L. and Mary Adams  
Mr. David M. Alexander  
Michael and Anne-Mari Alexander  
Linda Allen  
Ms. Sara Elizabeth Allgood, M.D.  
Anxiety Treatment Center  
Lamar and Brenda Ashe  
Mr. Jerry C. Austin  
Marty and Patricia Baker  
Mrs. Ann Brown Ballard  
William and Patricia Barnes  
John Barnhardt, III  
William and Harriet Barnhardt  
Edwin C. Bartine and Elizabeth  
Gwynn  
John and Freda Barton  
Basinger Realty Company  
Jeff and Maura Baughman  
Dow and Kathryn Bauknight  
Tina Beatty  
Mr. Frederick Becker, III  
Roger Beebe and Nance  
Smithwick  
Bruce and Becky Beerbower  
Mike and Barbara Bernath  
Richard Bird  
Jerry and Irene Blackmon  
Ms. Dianne K. Blanke  
Thomas A. Blocker  
Douglas Sea and June Blotnick  
Ms. Emilie R. Booker  
William and Laura Bowden  
Richard and Elizabeth Boyd  
Ms. Mary Boyer  
Mr. Jack O. Boyte  
H.Grier and Kim Starnes Bradford  
Ms. Doris Anne Bradley  
Arthur and Kathryn Brink  
James and Jan Brittain  
Katherine Broach  
Scott and Kenni Brooks  
Mr. and Mrs. Gerald L. Brown  
Ms. Mary H. Bruce  
Christopher and Amanda  
Buchanan  
George and Mary Lou Buck  
Graham and Pamela Bullard  
Ralph and Robin Burt  
Ms. Sally H. Byrd  
William and Nena Cahill

Mr. Chris Campbell  
Mrs. Frances K. Campbell  
Roger and Joan Cannon  
Judith Carpenter  
Mr. William A. Carpenter  
Joseph and Stephanie Cavano  
Alan and Laura Chadd  
Samuel Chapman  
Kathryn Clancy  
Julie C. Clarkson  
Ms. Ruth M. Cobb  
Howard and Janice Cohen  
Gene and Susan Cole  
Richard and Florence Cole  
Mr. Daniel S. Coley  
Ceasar Cone  
Nancy Conrad  
Mr. Stephen F. Copulsky  
William and Stephanie Cornett  
Mr. J.R. Costin  
Cottingham-Chalk & Associates  
John and Mary Council  
DeWitt Crosby  
William and Melaney Culp  
Geoffrey and Sarah Curme  
Paul D'Hoore and Lee Lewis  
Bruce and Debra Darden  
Carl and Delphia Daniel  
Eric and Melba Daniels  
Jack Drost  
James and Laura Duis  
Joe and Christina Duke  
Miriam Dixon  
Mr. J. Michael Davis  
Mr. Joseph Davant  
Mr. William J. Duston  
Ms. Carol A. Douglas  
Norman and Debbie Davis  
R. Owen and Barbara Doster  
Robert Davis  
Robert Dulin and Ann Heyward  
Dulin  
Scott and Catherine Denham  
Scott and Darla Davis  
Mike and Elyn Dortch  
George and Irene Dowdy  
Mr. John M. Eaker  
Leonard Martina and Beth Eakes  
E. H. Meadows and Ed Easter  
Charles and Julia Elliott  
Mark and Kelly Epstein  
ESD Architects and Interior  
Design  
Donald Evans  
Thomas and Julie Exley  
Jim and Jan Farley  
Amy Farrell  
Ferguson Supply and Box Mfg.,  
Co.  
Elmar and Suzanne Fetscher  
James and Donna Flynn  
Bill and Linda Finger  
Patrick and Barbara Finn  
Scott and Ashley Fisher  
John Fitzhugh  
John and Lynne Ford  
James and Mary Frances Forrester  
Frank and Janet Fortner  
G. Scott and Mary Elizabeth  
Francis  
Jeff Neuville and Michele  
Francois  
George and Alice Freeman

W. Bradley and Diane Freeman  
Jennifer Frye  
Ms. Catherine C. Fuller  
Charles and Frances Furr  
Herman Furr, Jr.  
Doug and Nancy Gadd  
Martin and Lisa Gaffney  
Michelle Thiedeman Garey  
Dale and Rosemarie Gentle  
Don and Sarah Gillespie  
Globallab Solutions, Inc.  
Harry and Ellen Goff  
Richard and Rosemary Goodall  
Seddon and Jane Goode  
Mr. Joseph W. Grier, Jr.  
Richard and Betsy Griffin  
Robert and Molly Griffin  
Thomas and Catherine Grimes  
William and Deidre Grubb  
Ms. Megan L. Guhl  
Sisir and Lola Sen Gupta  
Ms. Karen Hales  
John and Lise Hain  
Paul and Anne Hakewerth  
David and Mary Hall  
Ms. Helen A. Halliday  
Thomas W. Hanchett and Carol Sawyer  
Donald and Amy Hardin  
James Harrill  
Rodger and Karen Hartwig  
Brian and Ardyth Hearon  
Steven and Dorothy Hedberg  
Margaret Heidenreich  
Helms, Cannon, Hamel & Henderson  
Mr. and Mrs. H. Parks Helms  
Bruce and Lynn Henderson  
Mr. David L. Henderson  
Perrin and Anne Henderson  
George and Susie Henry  
Karl and Merna Hesse  
Mrs. Leslie Hickman  
Mrs. Barbara B. Hiestand  
Ms. Janet F. Hince  
Myron and Katie Hipps  
Mr. Stephen Hixon  
Bennett Hollenberg  
Mack and Georgia Hollis  
Rev. E. Thomas Hogan  
Ashley and Wanny Hogewood  
Ms. Kim V. Hombs  
Mr. and Mrs. Robert C. Hord, Jr.  
Chip and Victoria Howell  
Fred and Jeannie Howell  
Erma Deen Hoyle  
Rich and Debbie Hubbard  
Mr. Charles Huff  
Mr. Sigmon Huitt  
Kathy Izard  
Jason A. Jacobs and Carrie Esperseth  
Lane Jacobs and Tamara Titus  
Richard and Jenny James  
Mr. Ken A. Jarvis  
Brian and Sarah Jenest  
Jerry and Susan Jernigan  
Donald and Ann Jones  
Steve Michael Jones  
Mr. Thomas H. Jones  
Meredith Judy  
James Kammer  
Ms. Barbara J. Kasler  
Mr. Mike J. Kavanagh  
Mr. and Mrs. Richard Keating  
Hal Kempson  
Anthony and Linda Kidd  
Carol and Dean King  
Ms. E. Jean Kisinger  
Norman and Linda Kramer  
Theodore and Cynthia Kratt  
Jeffrey and Liza A. Kravis  
Mark and Karis Kremers  
Andrew and Sarah Kromer

Betty and Clarence Kuester  
Steven and Eve Kummert  
Mr. Henry A. LaBrun  
M. Lawrence and Alice Mauney  
Soong and Hannah Lee  
Jamie Ashley Leggett  
William and Marina Leonidas  
Jeff and Aimee Levi  
Ms. Janet E. Levy  
Jeff and Karen Lineberger  
Mr. and Mrs. Joseph Lineberger  
Ms. Carla Linster  
John and Clarice Locke  
Giles and Elizabeth Loftin  
Michael and Virginia Logan  
Charles and Sandra Long  
Robert Mary Long  
Damaso and Francis Lopez  
Richard and Carol Luttrell  
Patricia Lyke  
Spurgeon and Margaret Mackie  
Gus and Geary Mandrapilias  
Steve and Diane Marsfelder  
Mr. Charles B. Martin, Jr.  
James and Barbara Masson  
James and Betsy Matthews  
William and Catherine Maxwell  
J. Alan May and Ann Tippitt  
Alan Mayfield  
Richard and Andrea McCall  
Jim and Jennifer McCarthy  
Ms. Anna McClelland  
Andy and Donna McClure  
J. Martin McCoy  
Richard and Jane McCoy  
Hugh and Jane McColl  
Richard P. McCracken and Susan Mitchell  
Ms. Susan E. McEwen  
Samuel and Linda McGregor  
John and Jean McKay  
Mr. T. Bragg McLeod  
William and Rebecca McNair  
Ms. Deborah McRae  
Jack and Pat Meckler  
Terrence and Julia Meier  
H. Burt and Phyllis Melton  
Ralph and Brenda Messera  
Ms. Mary Metzger  
Dr. and Mrs. George R. Miller  
Mr. and Mrs. Keith Miller  
Thomas and Janet Miller  
Hardin and Linda Minor  
Richard and Diane Mitchell  
Wade and Rebecca Mitchem  
Edwin and Ruth Moloney  
Tom and Jackie Mooney  
Bob Morgan  
Edwin and Sharon Morris  
Mr. Ted Morris, Jr.  
Terrence and Lorrie Morton  
Grady and Kim Moseley  
Ms. Beverly S. Moss  
Fred and Kay Moss  
Frank and Faith Moxham  
Jonathan E. Murray and Wendy Waite  
Lowell and Janet Nelson  
Tom and Anna Nelson  
Mary S. Newsum  
Salvatore Nicolosi  
W. Olin and Marian Nisbet  
Douglas and Ruby Nock  
Tom and Kathleen O'Bannon  
Dan Murrey and Katie Oates  
The Odom Firm PLLC  
Terry and Linda Oelschlaeger  
Janice Valder and Bernard Offerman  
Thomas J. Orr  
Lester and Patti Osborn  
Kirk and Sarah Otey  
Michael and Jacqueline Ottinger  
Samuel and Myrna Owens

Francis Parker  
Ronald and Becky I. Parker  
William and Anita Parker  
Dr. Marie E. Peine  
Allison and Kathryn Pell  
Phyllis Peltack  
Richard and Lucy Penegar  
Albert Pera  
Mr. Edward W. Phifer, III  
Randy and Emily Phillips  
R.A. Piccalo, Inc.  
Rich and Sarah Potts  
Dr. and Mrs. James A. Pressly  
Janice Cecelia Price  
Vernette Price  
W. James and Marjorie Price  
Ms. Betsy Prichard  
Provident Development Group, Inc.  
Jim and Faye Pugh  
Mr. William E. Pugh  
D. Scott Pyle  
Patrick and Carol Rich Raedy  
Dan Ragan  
Ms. Lila S. Rankin  
Judith Ratcliffe and David Anderson  
Thomas Raymond  
Dr. and Mrs. Patrick Reames  
Doris Ann Reavis  
Ann Reynolds  
Merk and Phyllis Riddlesberger  
Mrs. Sue Spayth Riley  
Jay and Cathryn Rivers  
David and Pamela Roberts  
Joseph and Linda Roberts  
Thomas and Joanna Roberts  
Mr. and Mrs. J. Neil Robinson  
Ms. Kathy M. Robinson  
Mr. Rodney E. Robinson  
Kay Roderick  
George Rohe  
Michael and Linda Rose  
Claude and Mary Ross  
Ed and Ann Rowell  
Elizabeth Rudisill  
Tim and Patricia Ryan  
Edward and Thomasina Sadler  
Ken and Ruth Samuelson  
William and Patricia Satterfield  
Louis and Martha Schmitt  
Donald W. Sheriff and Kim Garrett  
Mr. Charles Sevcik  
Edward and Claire Shapack  
Mr. A.R. Sharp, Jr.  
Mr. John E. Silvia  
Robert Simmons  
Dick and Jennie Lou Skaff  
Doug Smith  
Harold and Dorothy Smith  
Thomas Smith  
Mr. and Mrs. J. M. Spearman  
Mr. Fred E. Sprock, Jr.  
Harvey and Donna Spurr  
Jeff Spray  
Jim Stancil  
Carol Staton  
James and Martha Stenhouse  
Rich Stephens and Beth Henry  
Dr. Jenny K. Stern  
Donald Pearl and Bonnie Stewart  
David Stines  
Mrs. Lisbeth Gibson Stockman  
David Stoner  
Patrick and Sally Stout  
Robert and Janet Stout  
Mr. Rick Stowe  
Mr. C.D. Stroup, III  
Charles Sugg and Mary Dickson Sugg  
Maha Swede  
William and Linda Swayne  
G. Charles and Linda Talmadge  
Vivek and Mary Tayal  
Joseph Taylor

F. Boyce Thies  
Brenneman and Karen Thompson  
Hayes Thompson  
Michael and Cynthia Thomson  
Rixey and Jane Todd  
Michael and Baxter Toomey  
David and Nancy Townsend  
MaryAnn Mueller and Diana Travis  
C. Brent and Claire Trexler  
Charles and Julia Trice  
Phillip and Barbara Trick  
Mr. William H. Trotter, Sr.  
Chris Tull  
Stephen Tullock  
Ret and Diane Turner  
Thomas and Sarah Turner  
Donald Tyson and Katherine Sparrow  
Ms. Anne J. Udall  
Ronald and Gayle Underwood  
William and Sally VanAllen  
Bayard and Virginia VanHecke  
Mitchell and Kathleen Varner  
John and Kate Vassallo  
Art Viles and Beth Smith  
Timothy and Cynthia Von Der Embse  
Hamlin and Julia Wade  
Mrs. C.W. Walker  
John and Sylvia Wallace  
Mr. Chris E. Wannamaker  
E. Wayne Washam  
Mr. Thomas C. Watson, Jr.  
Tom and Kim Watson  
Andrew Weathersbee  
Kenneth and Rebecca Weeks  
John Wester  
Jeff Jennings and Pam Whistler  
Ms. Anne White  
Gerald and Nancy White  
Will and Jacque White  
Dr. and Mrs. Donald L. Whitener  
Bill and Stephanie R. Whitesides  
Ms. Kia Whittlesey  
Chris and Lisa Wilkins  
David Jan Williams  
Mr. Derek Williams  
F. Lane Williamson  
Mr. Tim L. Wilson  
Thomas and Roberta Wilson  
Leslie Winner  
Wirth & Associates, Inc.  
Kelly Lynn Wood  
Mrs. George Wrenn  
Fletcher and Anne Wright  
John and Sandy Yakob  
Mr. Thomas M. Young  
Andrew and Lisa Zerkle

### River Protector, \$50+

Gary Ackerman  
Mr. and Mrs. Ralph Alexander, Jr.  
Jonathan and Maria App  
Mr. Dennis Appleyard  
Mr. and Mrs. Vernon T. Anderson, Jr.  
Elizabeth Arbuckle  
Mr. and Mrs. John L. Armistead, Jr.  
Ms. Beth Armour  
J. Candace Armstrong  
Todd and Marcy Arnold  
Gregory and Ann Austin  
Jeffrey and Jessica Austin  
Ed Baesel  
Ms. Jacquelyn D. Baker  
Ben and Maggie Baldwin  
Larry and Louise Barnard  
Ed and Susan Barnhart  
Joe and Ruth Barrett  
Beady Waddell Financial Services  
Kary Schmidt Beaman  
Alfred Behrens  
Mr. Richard M. Bell  
Andrew and Christine Beloni  
Richard and Christie Benoit  
Mark and Louise Bernstein  
Ms. Marilyn H. Best  
William and Huldah Bewley  
Steven and Elizabeth Birch  
Barbara Birge  
Bob and Sandra Bisanar  
Dr. F. Alice Bishopric  
Greg and Megan Blackwell  
Ms. Terri Blake  
James and Alberta Blecke  
Ms. Rebecca A. Blecke  
Alan and Rosalie Blumenthal  
Mr. Scott Bodien  
Jean Boggs  
Betsy Bond  
Mr. Russell R. Boracci  
David Boraks and Shelley Rigger Boraks  
Michael and Hanna Boxer  
Dr. James G. Boyes  
David Brackett  
John and Catherine Bragg  
Delilah Brandon  
Ms. Judith M. Bratton  
John Brewer  
Kimberly F. Brewster  
Dorothy Bridgeman  
Henry and Daisy Bridges  
Amy Brooks  
Bill and Elaine Brooks  
Gilbert and Jane Browne  
David and Patricia Buetow  
Dahal and Amy Bumgardner  
Roger and Joyce Burt  
Donald and Michele Burton  
Watson and Jane Bailey Burts  
Charles and Susan Bush  
Chris and Susan Bush  
Donald and Priscilla Bynum  
E. Scott and Mami Carpenter  
Robert and Sue Carpenter  
Mamie Caskey  
John and Ann Chalk  
Frank Chance  
Mac and Mary Christenbury  
Mr. Don Clapp  
Andrew and Laurie Clark  
John Clark  
Dumont Clarke  
Daniel Clodfelter and Elizabeth Bevan  
Jane Coleman  
Mr. Mark Coleman  
Roger and Virginia Cobb  
David Cohen and Amy Grissom  
Joel and Betty Cohen  
Mr. Robert W. Cook  
Ivan Cooper  
Norton and Linda Cowart  
William and Susan Coxe  
Mr. William Craemer, Jr.  
Dominick and Angela Crapanzano  
Mr. Thomas B. Crates  
Mr. and Mrs. Richard T. Crenshaw  
Kurt and Erin Culbert  
Mr. Gabriel B. Cumming  
Chris and Elizabeth Daly  
Ann Woodall Davant  
Anne Davidson  
Les and Ann Davis  
Nicole Dawson  
Mr. Clifford M. Deal, Jr.  
Foster and Maureen de la Houssaye  
Verne and Dianne Deason  
Eric and Shari Deitchman  
Frank and Carol Dixon  
John Dosser  
W. Eric Rosellen Dunn  
J. Porter and Victoria Durham  
Herschel and Sarah Ellis  
Debbie Enna  
Robert and Leah Ensor

H. M. Faggart  
Elaine Faïres  
Woodard and Marion Farmer, Jr.  
Charles and Nancy Favor  
Mr. H. McDonald Felder  
Robert Ferguson and Chris O'Conner  
H. Linn and M. Lou Finger  
Mary Jean Fisher  
Fletcher and Jill Flynn  
Mrs. Carol Fogarty  
William Trent Foley and Pamela Kelly  
Ron and Pamela Foltz  
Glen and Mary Fossella  
Dr. J. Norris Frederick  
Mr. James D. Galloway, Jr.  
David and Kathy Garmon  
J. Stuart and Rose Marie Gaul  
Mr. Jonathan Gellman  
William Toole and Claudina Ghianni  
Bill Gibbons  
Andy and Jane Glenn  
Callie Glass  
Helen Goans  
Ms. Anita H. Godwin  
Edward and Lori Ives Godwin  
Fred and Christine Goodson  
Steve and Meg Grahame  
David Grant  
Mr. Cameron Green  
Mark and Melanie Gregory  
Stephen and Joy Groves  
Peter and Ann Guild  
Elizabeth Guzynski  
Gordon and Betty Hacker  
Mr. Paul F. Haddock, III  
Peter Hairston  
Douglas and Mary Long Handy  
John and Christina Hanna  
Christopher and Jeffie Hardin  
Ms. Julie Hardin  
Pam Hargett  
Mr. Brian Harley  
Phillip and Jana Harston  
Carol Ann Hartley and Thomas Cole  
Thomas and Hendrika Hatley  
Mrs. Mary Hovis Heath  
Buddy and JoAnne Hege  
John Heil and Harrison Hagen Heil  
William and Margaret Heeney  
Jennifer Helton  
Ms. Carmen D. Henderson  
Ms. Sarah S. Henderson  
Mrs. Barbara Hess  
Carl and Caroline Hewett  
Ms. Rachel G. Hill  
Dorothy Hodges  
Dan and Cheryl Hoffman  
Mr. Pace Holding  
Sylvia Holmes  
Frank and Suzan Hough  
Mr. Damon Houghton  
James and Laurel Houser  
Douglas and Lanier Hoy  
Mr. and Mrs. Chris D. Huffstickler  
John and Karen Humphrey  
Mr. James B. Hunter, Jr.  
Fred and Patricia Hutchinson  
Iron Impressions, Tex and Grace Squires  
Ms. Karen Hite Jacob  
Dr. and Mrs. William H. Jarman, Jr.  
Ms. Abigail Jennings  
Clark and Christine Jensen  
Cyrus and Liz Johnson  
Molly Waldrup Johnson  
Robert Johnston  
James and Barbara Jones

Kenneth and Emily Jones  
Mr. Michael L. Jones  
Jenny Joyner  
J. Randall Mishoe and Deborah Kauffman Mishoe  
Mr. Stephen Keider  
Karen Kelley  
Ms. Kay K. Killian  
Joseph Kilpatrick  
William and Betsy King  
Mr. and Mrs. James W. Kirk  
Mr. Robert F. Kleiderlein  
Benjamin and Rosemary Klein  
Kenneth and Sally Kneidel  
Mrs. Constance Kolpitcke  
Priscilla Laula and Arthur A. Kohn  
Ingrid Lachner  
Kent and Caroline Lamm  
Cynthia Lane  
Hope Lanier  
Tom Lannin  
Steve Law  
Janet Laver  
David and Janet Layne  
Elizabeth and Haynes Lea  
Kevin and Debbie Ledet  
Thomas and Carla Ledford  
Roger and Donna Ledoux  
Dallas Lee  
Fitz and Rose Ann Lee  
Michael and Mary Legendre  
Donald and Ellice Liss  
Eric Locher  
Samuel and Virginia Long  
Mr. Charles Longbottom  
David and Joyce Love  
Dr. Tolbert W. Lowery, DDS  
Steedman and Cissi Lyles  
Allison Dudley Malter  
Ms. Ann Marsh  
Ms. Virginia W. Mason  
Alan and Shannon Martin  
Richard and Pennie Martin  
William and Barbara Martin  
Mr. James L. Mason, Jr.  
Ron and Carole Massey  
Mrs. Elizabeth McColl  
Bill and Bonne McCoy  
Ms. Eunice W. McCoy  
Harlan and Kim McCulloch  
James and Ashby McDonald  
Fred McGee  
Ms. Mary L. McQueen  
Paul and Edit Mcpherson  
Susan McRae  
Lawrence and Audrey Mellichamp  
William Mary Menzies  
Ralfe and Carol Mesrobian  
George and Bonnie Michael  
Ms. Mary R. Mintich  
Diana Mitchell  
Mr. Charles E. Moon  
Ms. Lucy Moore  
Theresa Morr  
Mr. Albert Richard Rankin Morris  
Scott and Stephanie Moss  
Lee and Gwynne Movius  
Larry and Patricia Mullenix  
Karl and Joan Munn  
Mark Munson  
David and Constance Mursch  
Mrs. Elizabeth P. Nagle  
Rich and Barbara Neidinger  
Drs. Daniel and Teresita Nelson  
David and Judy Nichols  
Judith Nisbet  
Connaree Nolen  
Frederick and Mary Lou Norcross  
Ms. Marsha J. O'Brien  
Tommy and Martha Odum  
John and Michelle Ong  
Mr. and Mrs. Raymond L. Ozmore  
Bill and Henriette Palmer  
Gary and Harlee Palmer

Mr. and Mrs. John C. Page  
Tim and Nancy Passchall  
Ms. Dawn P. Patterson  
James Patterson  
Carla and Eric Pence  
Catherine Peterson  
Mr. and Mrs. Jim Phelps  
Mr. David M. Phillips  
Nancy Pierce  
Zeta Pittman  
Mrs. Birshal E. Poole  
Randy and Jeanne Poole  
Frank and Maria Portone  
Robert and Helen Preston  
Kim Price  
Walter and Christine Pringle  
William and Kathy Pritchard  
Lisa Quisenberry  
Bruce and MaryRose Randall  
Abizar Rangwala  
Charles and Karin Rankin  
Mary and Nathan Rantala  
Mr. Kurt R. Rawald  
Christine Remme  
Mr. Conrad Richards, Jr.  
T. Eric Roberts  
Manley and Jennifer Roberts  
Betty Robinson  
John and Lynn Rosental  
Donna Roth  
Paul and Joy Rouso  
Ms. Clare G. Ryan  
Ms. Sheila J. Saints  
Carmen and Nancy Sarno  
Greg and Libby Sarvis  
Ms. Donna Savage  
Ms. Elizabeth W. Schroeder  
Steven and Anne Scott  
William and Jan Scullin  
Octavia Seawell  
Peter Shea and Linda Sullivan Shea  
Mrs. William M. Shelley  
Richard and Sandra Shober  
Laura Shockley  
Carlos and Bethany Sicilia  
Gail Silkstone  
Ronald and Karen Simono  
Daniel R. Stewart and Allyson Sipple  
Calvin and Rodney Ann Smith  
Kenneth and Anne Smith  
Marek Smith and Lisa Beckstrom  
Mr. Matthew T. Smith  
Nat and Brenda Smith  
Yates and Nancy Smith  
Brant Snavely  
Mr. Gary A. Spargo  
Mr. and Mrs. John Springer  
M. Julie Stafford  
Susan Stafford  
Paul and Ann Standridge  
Ms. Ansley Starr  
Andrew Lax and Judith Starrett  
Jack and Melanie Steele  
Mr. R. Bruce Stevens  
Bryan and Alyson Stonebraker  
Mrs. Anne F. Stuck  
Frank and Shelley Sturges  
William and Teresa Sturges  
Ray Stutzman  
Frank and Marilyn Sutterlin  
Toccoa Switzer  
Ms. Wendy G. Talley  
Brian Tarr and Kathleen Moloney Tarr  
Sue Taylor  
Team Treadway, Inc.  
Alan and Betty Thaling  
Frank and Harriet Thompson  
Paul and Bobbie Thompson, Jr.  
Richard and Theo Thompson  
Michael and Rosemary Tipton  
Robert and Stephanie Tolan

Ms. Jane O. Towns  
Ms. Roberta M. Tremain  
Dan Tuburski  
Robin Underwood  
Gregory and Sharon Urban  
Van and Karen Vagianos  
Mrs. Harald and Barbara Vaher  
Peter and Jan Vandevanter  
Richard and Barbara Voorhees  
Michael and Catherine Vowell  
Hallam Walker  
Danny C. Wallace  
Mr. William T Wallace  
Julianne Watson  
Mr. Darrell Watts  
Russell Weil  
Ronald and Janice Weiner  
Penny Welling  
Lyman Welton  
James and Ruth Werntz  
Mr. Steven M. West  
Stan and Lilian Wetmore  
Lamar and Bette White  
Mr. and Mrs. K.W. Whitney  
Mr. Neill Wilkinson  
Laurens and Libbie G.Y. Willard  
Ms. Laura Williams  
Bill and Pat Williamson  
J.D. Wilson  
James and Leslie Wilson  
Ms. Sharon Wilson  
Mr. Thomas M. Wilson  
Ryland Winston  
Dr. and Mrs. James H. Woodward, Jr.  
Kate Worm  
Robert and Jenny Lou Wright  
Jarrett and Mary Wyant  
Daniel and Victoria Wyatt  
Jim Morris and Laura Yaeger  
Kenneth and Claiborne Yarbrough  
Mr. Bruce Yelton  
George and Elaine Yoehrling  
Albert and Agnes Yoos  
Valerie York  
Mark and Linda Zagar

**Habitat Conserver,  
\$35+**

Mr. Scott Acheson  
James and Sharon Alderman  
Barbara Alexander  
Frances Alexander  
James and Martha Alexander  
Richard and Clare Alexander  
Craig and Caroline Allan  
Mr. Robert E. Allen, Jr.  
James Antoszyk and Shelley Wallisch  
William and Ellen Archer  
Lorie Arthur  
Rita Arundell  
Mr. Robert Baldwin  
Ms. Julia H. Barringer  
Mary Beam  
Benjamin Benson  
Benedict and Carolyn Berry  
Joel Blackwelder  
J. Kathryn Blanchard and Greg Ross  
Mr. Jay Blanton  
Ms. Elizabeth E. Bliss  
Paul W. Bolick  
John and Joanne Bonestell  
Daniel and Pam Bonney  
Ms. Lynda Boozer  
B.F. and Nan Bracy  
Ms. Patricia J. Brennan  
Barton and Brenda Brennecke  
William Brewster Co.  
Susan Broome  
Marian H. Browder  
Harold O.J. and Grace Brown  
Herbert and Frances Browne

Joy Bruce  
Anthony and Leona Bucci  
Bess Burns  
Bryan Butler  
Robert and Elinor Butt  
Donald and Barbara Caldwell  
Shannon Carney  
Susan Carpenter  
Frank Carrese  
Mr. and Mrs. Gerald W. Caughman  
Carol Collins Clapp and Lillian Roberge  
Carlton and Beth Clark  
Saxby and Elizabeth Chaplin  
Ms. Shirley J. Collins  
Ms. Gloria J. Coltharp  
Mr. Elliott B. Coarsey, Jr.  
Charles and Gwen Cook  
Mrs. Sue D. Coonen  
Hannah Craighill  
Judith Crane  
Nelson and Florence Crisman  
Mrs. Peggy P. Crowder  
Mr. Richard F. Crown  
Mr. Robert P. Cumming  
Ms. Mimi Curlee  
Ms. Maria Curran  
Ms. Joan Cuthbertson  
Bill and Yen Davenport  
Bryan and Kristine Davis  
David Dent  
Barbara Doherty  
Michael and Tammy Dorcas  
Ruth Dromgoole  
Patrick and Patty Duggan  
David and Laura Edwards  
Tim and Coleman Efird, II  
Ms. Mary Jane Ellington  
Stephen and Elizabeth Ellis  
Ms. Billie S. Erwin  
Paul and Vicky Faris  
John and Barbara Finger  
Dr. Denise Finck-Rothman  
Ms. Charlotte Fletcher  
Mr. Jerry W. Fogle  
Mr. James M. Foreman, Jr.  
John and Kim Frazier  
Matt Frazier  
Thomas M. Frazier  
Colleen Frenzel  
Murray and Frances Fugate  
Mathew and Vicki Fultz  
Ralph and Wendell Gable  
James and Marilyn Gallagher  
Thomas and Debra George  
Gloria Gibson  
Brett and Nancy Gilbert  
Ms. Carol S. Golden  
Robert and Jane Gorman  
Mr. James F. Green, Sr.  
Green Thumb Garden Club  
Ms. Fania M. Greenwood  
Walter and Sandra Griffith  
Eugene and Julie Griggs  
Gary and Pushpa Gross  
Mr. and Mrs. Cleo T. Gullick  
H. W. Culp Lumber Company  
Robert and MaryAnne Haden  
Pamela Hahn  
Mr. Henry Haitheox, Jr.  
Francis and Charlotte Hammond  
Kyle and Beth Hanrahan  
Dan and Cindy Harbacevich  
A.S. and Lislott Harberts  
Susan Harmon  
Mr. and Mrs. Herbert L. Harris  
Edd Hauser  
Edmund and Mary Catherine Hawes  
Samuel and Dorothy Hay  
Bob and Gail Hazard  
Carl and Clara Hazberg  
Gregory and Diane Helms

Ms. Robin M. Helton  
Lorrie Henry  
Cameron and Chris Herrera  
Charles and Pamela Hodge  
Mr. Sam Hodges  
Cornelia C. Hoffman  
Dale Holland  
Camille Hopkins  
Richard D. Houk  
Stephen Houser  
Robert and Fern Howard  
Thomas and Gaye Howard  
Jane Hoyle  
Nancy Huegerich  
James and Helen Hunt  
Ms. Jane W. Hunter  
John and Ruth Hurst  
Mr. David Hylton  
Dr. Gary S. Indenbaum, Ph.D.  
Eric and Ava Jarrett  
David and Susan Johnson  
Gregory and Brenda Johnson  
Ms. Jean P. Johnson  
Ms. Paula E. Johnson  
Paul Jones  
Mr. Richard A. Jones, Sr.  
Joel and Jeanne Justiss  
James Keane  
Walter Kelly  
Ms. Rene Kimray  
Ms. Patricia M. Korry  
Ms. Judith Krahrmer  
Marc and Marissa Laster  
Herbert and Lynn Lawton  
Ms. Joan W. Ledford  
Eva Lee  
Drs. Philip and Cheryl Leone  
Mr. Jeff Levie  
Suzanne Linder  
Mr. and Mrs. Prescott Little  
Chris and Terry Loeb  
Ms. Linda Long Loftin  
James and Donna Love  
Ms. Diana R. Mahaffey  
Charles Marshall  
Mr. and Mrs. Julian D. Mason, Jr.  
Mrs. Nancy W. Massey  
Carolyn Matlack  
Richard and Martha Mayberry  
Daniel and Michal McDonough  
John McLaughlin, Jr.  
Dr. Jonnie H. McLeod  
Lise McStravick  
Ms. Renee Mercer  
Richard and Janice Miller  
Milon Forbes Trucking  
Mr. Thomas W. Miralia  
Edward and Diane Moan  
Flynn Mooring  
Charles and Elizabeth Myers  
Carl and Doris Neal  
C. Harper and Betty Newbold  
Helen Newman  
James and Betty Nisbet  
Mr. Robert W. Norris  
David and Betty O'Leary  
R.A. Oliphant and Co., Inc.  
David and Kathy Oliver  
Ms. Carolyn C. Palmer  
William and Sandra Palmer  
Mr. Rusty Painter, Jr.  
Mr. David M. Patton  
Kathryn Peacock  
Betty Peck  
Roger and Alisa Pelz  
Ms. Sarah B. Perry  
Susan Peters  
Henry and Carol Pharr  
J. Robert and Marion Philpott  
Martha Rogers Plaster  
John and Caroline Plyler  
Thomas and Ledayne Polaski  
Mr. and Mrs. Scott Pollard  
Mrs. Judith C. Preslar

Mrs. Marion Pritchett  
Preston and Lynn Purdum  
Ken and Kena Quilty  
Ms. Anne Rayfield  
Donald and Cheryl Rhoades  
Charles Chafin Rhyne  
Conrad and Teresa Rhyne  
Jack and Patricia Rhyne  
Ruth Rice  
William and Lynn Robertson  
Charles Roe  
Alan Rogers and June Thoreson-  
Rogers  
Dr. and Mrs. Russ Rogers  
Mike and Christine Romot  
Bill and Sandy Rook  
Michael and Heidi Rotberg  
Jane Royal  
Martha Sanburg  
Mr. Steve Sasz  
Kenneth A. Saunders and Sandra  
Lawhun  
Merlyn and Judy Schuh  
Ms. Louise J. Scott  
Ms. Connie Sharp  
Ms. Shannon C. Sharp  
Douglas and Kay Sheets  
A. Burton and Pamela Shuford  
Cameron and Michael Shugart  
Glen and Brenda Singletary  
Marilyn Singleton  
Paul Sires and Ruth Lyons Sires  
Nancy Sloan  
Roy and Mary Smart  
Frances Smith  
Mrs. Margaret B. Somerall  
Lynn and JoAnn Spees  
Jason Sperati  
Richard and Nancy Stark  
Mr. Robert M. Stein  
Mr. Jeff Steinmetz  
Lillian Steinner  
Jacob and Fay Stewart  
Teresa Stewart  
Thomas F. Stewart  
Nicholas Street  
Tim Strong  
Dr. and Mrs. Alfred and Mary  
Louise Stuart  
Dr. George Sutcliffe  
Mr. Homer B. Sutton  
John Tibbs  
Beverly Thomas and Jesse  
McDaniel  
Ms. Gail L. Thomas  
Mrs. Nelda C. Thomas  
Anne Thompson  
H. Lawrence Thompson, IV  
James and Catherine Tolman  
Robert and Katharine Tompkins  
Bradley Touma  
Carolyn Townsend  
David Trawick  
Robert and Mollie Trosper  
Mr. and Mrs. J. Harmon Vickers  
Ms. Marty Viser  
Jason and Tracy Walser  
Ms. Anett B. Wannamaker  
Lori Warren  
Mr. Tom Warshauer  
Mr. David B. Watts  
Michael and Marlene Way  
Mr. and Mrs. Tom Weathers  
E. T. and Barbara Weiant  
Mr. Thomas P. Welchel  
Mr. Jonathan R. Wells  
Mr. Richard Werner  
Wayne and Nancy Weston  
Virginia Wheelock  
Leann Wheeler  
Carolyn G. White  
Gene and Cynthia White  
Hugh and Harriet White  
W. Scott White

Ms. Harriett M. Whitsett  
Ms. Cassandra W. Wierman  
Robert and Barbara Wiggins  
Davis and Anne Williams  
Mr. and Mrs. Robert K. Williams  
Mary Wilson  
Mr. Jonathan D. Winn  
David and Marcia Wright  
Michael York

### Introductory

Denise Altman  
James and Susan Anderson  
Donald and Cheryl Baker  
Donald and Jean-Marie Bass  
Mary Baumgardner  
Terry and Dana Church  
Joy Clark  
Robert and Carolyn Coleman  
Daniel and Sheila Coulter  
Jacob Cseke  
Rodney and Barbara Dean  
Thomas and Nancy DeVries  
Benny and Janice Eanes  
Richard and Nancy Embry  
Charles and Lois Kay Farmer  
Jack and Blynn Field  
Theodore Fillette  
Mrs. Myrtle B. Goldstein  
Green Acres Garden Club  
Ms. Helen S. Harrill  
Colin and Roberta Hayes  
A. Myles and Christine Haynes  
Catherine Heath  
James and Nancy Henderson  
Edward and Jean Hord  
Truman and Marie Hudson  
Edward and Leslie Jenkins  
Jim and Edith Johnson  
John and Dawn Keller  
Ms. Darlene Kucken  
John and Catherine Lewis  
Gerry and Marianne Lieberman  
Bob and Barbara Lockwood  
Jacqueline Losche  
Wayne and Jane Lowe  
Mr. and Mrs. Powell Majors  
Graham and Susan Mason  
Mr. Eric McClellan  
James and Patricia Murtaugh  
Pauline Niilend  
Jay and Marie Novello  
Margaret O'Connor  
Kevin and Courtney O'Neil  
Ms. Barbara S. Potts  
Daniel and Nancy Rutherford  
Robert and Sandra Scherman  
Peter and Diane Sherman  
Ms. Hope Sims  
Dr. James M. Tart, Jr.  
Zach and Sally Thomas  
Joseph Fail and Meta Thompson  
Richard and Adrienne Toenjes  
Raymond Twery  
Henry and June Vasoll  
Elizabeth F. Washburn  
Michael and Lois West  
Thomas and Edna Will  
Loy H. Witherspoon

### Stewardship

Frank and Kathy Bragg  
Hardin Properties, Mr. and Mrs.  
Dave Hoyle Jr.  
Clarence and Nadine Nesbit  
Richard and Sarah Park Rankin

### Honorariums

Barbara Alexander for Raul  
Corujo.  
Laura Allred for George and Mary  
Lou Buck.  
Ron M. Altmann for Mr. Howard

M. Cohen.  
For Rebecca Blecke:  
Conservancy board and staff,  
Lands Acquisition and  
Stewardship committees.  
The Cable Family for Jane Cable.  
Ann Crehore for Peetie Davant.  
Amy and Kevin Davis for Gabriel  
Cumming.  
Weston Figgins for Dave and  
Libby Cable.  
Claude and Pamela Freeman for  
Judson Allen, Steve Buck,  
Barbara Conrad, George  
Currin, Albert George Dasher,  
Howard Duvall, Stuart Elliot,  
Marion Hillen, Reuben  
Hufham, Charles McRee, Roy  
Michaux, Sarah Lindsay Tate,  
Caroline Tate, John Austin  
Tate Jr., John Austin Tate III,  
James Tyler, Dale Witt and  
Harry Wolfe.  
Mr. and Mrs. John L. Hallett for  
H. K. Hallett, II.  
Mr. David H. Henderson for  
Parker Whedon.  
Ashley and Wanny Hogewood for  
Mary Lou Buck and Hampton  
Thrower.  
Edward and Leslie Jenkins for Bill  
McMullen.  
Terry Loeb for Campbell Tucker  
and Jody Carpenter, soccer  
coaches.  
Isabel K. Lyle for Margaret  
Zimmermann.  
Richard and Martha Mayberry for  
Chatham Mayberry.  
Richard, Martha and Chatham  
Mayberry for Richard I.  
McHenry.  
Thomas and Janet Miller for Mark  
Jarrett, Nellie Johnston, Frank  
and Libby Justice, Charlie  
Keener, Tammy Rucker,  
Debbie Teague, Rich and Pam  
Ulrich, Gloria Walton and  
Scott Waybright.  
For Diane and Richard Mitchell:  
Sandra and Byron Chadwick,  
Lela Grady, David Lindeman  
and Barbara Wagner, Sherry  
Lira, James and Kristin  
Merckle, Edward Silver and  
Turner Chiropractic Clinic.  
Thomas and Jackie Mooney for  
David Kidd.  
Johan Newcombe for B.S. Howell.  
Harriet Payne for Gene and Ellen  
Brooke.  
Lisa Elliott Selby for Curtis  
Elliott.  
Mr. and Mrs. John Springer for the  
Price Family.  
John and Claire Tate, III for Frank  
Bragg.  
Marshall and Julie Yoder for  
Elaine Thigpen, Paul Marvin  
Yoder and Ora Joseph Yoder.

### Memorials

Marian H. Browder for Ann  
Benear.  
George and Mary Lou Buck for  
Vernita B. Coxie.  
Roger and Joyce Burt and Danny  
Wallace for Edward Wallace Sr.  
and Lettie Belle Shuford.  
Curtis and Dudley Carlson for  
Clara and Elmer Brown.  
Jackie Freeze for Jack and  
Margaret Russell.  
Ms. Elaine Faires for George and

Mary Huffstetler.  
Kristen Comstock for Evelyn  
Riley.  
Dr. and Mrs. James F. Matthews  
for Suzette McCommons  
Soule.  
Jay and Marie Novello for Les  
Brecht and Pauline Robertson  
Smith.  
For Dr. Robert Payne:  
G.L. and Ruby Bickett,  
Carolinas Healthcare System,  
James W. Cogdell, Donald  
Degan, Gary Doolittle, Charles  
and Julia Elliott, Jack and  
Eutha Hobson, Fred and Cathy  
Littlejohn, Isabel Lyle, Julian  
D. Mason Jr., Marjorie  
McDaniel, John Shofield III,  
William and Ernestine Sugg,  
Sam and Nanette Temple,  
Nelda C. Thomas, Jimmie and  
Beau Townsend, U.S. Trust  
Co., N.A., Hugh and Margaret  
Verner, Virginia and Joanne  
Wearn and Ralph and Sara  
Yarberry.  
Mary Porter for Robert F. Porter.  
Jim and Libby Preston for Mrs.  
Leona Mason.  
Katharine Steele for Richard  
Steele.

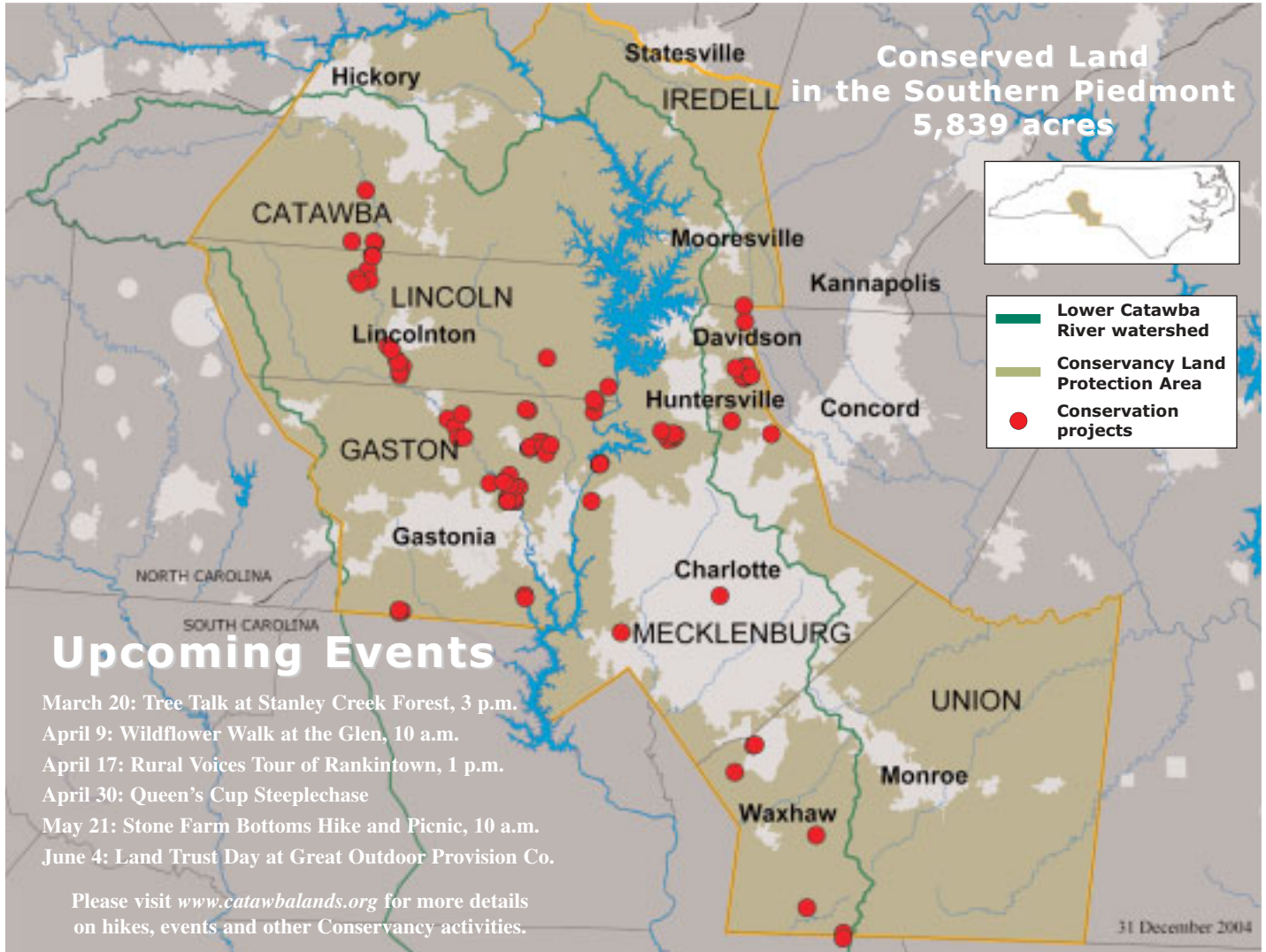
### Gift Memberships

Mary Edit Alexander to Richard  
Mattson.  
Dave Cable to Paul Mitchum.  
Dave and Libby Cable to Steve  
and Mary Dare Mayeux.  
Kristen Comstock, to Mary Flock.  
Anne Davidson to Allein Stanley,  
Susan Hopkins and Gerry  
Graham.  
David and Alice Herald to Vanessa  
Herald.  
Bruce and Beth Loftin to Giles  
and Lindsay Loftin.  
Charlie McRee to Hayes  
Thompson, Brian Barksdale  
Jr., J. Q. Freeman, Shoff  
Allison, Meg McRee and Ben  
Bridges.  
Lou and Lynn Mintzer to Kelly  
Lynn Wood.  
Margaret Morgan, to Sue Diehl,  
Jeanne Morgan and Tootsie  
O'Hara.  
Rich and Sarah Potts, to David  
and Abby Boggs, Bowen and  
Lucy Caldwell, Milt and Carol  
Childress, John and Susan  
Daniel, Mike and Minna  
Elliott, and Carol Staton.  
Andrew and Anne Waters, to  
Charles Waters and Linda  
Moxley.  
Tom Weathers, to Randy Costner.

*Every effort was made to ensure the accuracy of this list. Please notify the Conservancy office of any corrections, and we apologize for any errors or omissions.*

The Conservancy will publish its volunteer list in the summer newsletter.

Photos by Nancy Pierce, Dennis Milligan and Conservancy staff.



*Catawba Lands Conservancy is a member of the North Carolina Land Trust Council, 23 local and regional land trusts that collectively have protected more than 161,900 acres of the lands you love in North Carolina.*



Forwarding Service Requested

NON-PROFIT  
U.S. Postage  
Paid  
Charlotte, NC  
Permit No. 1967

*Preserving the Nature of Our Community*

105 W. Morehead Street  
Charlotte, NC 28202  
704.342.3330  
e-mail: [info@catawbalands.org](mailto:info@catawbalands.org)  
[www.catawbalands.org](http://www.catawbalands.org)

The Official  
Charity of

