

**MISSION**

Catawba Lands Conservancy permanently protects land, water and wildlife habitat to enhance your quality of life.

**BACKGROUND**

The Conservancy dates back to the early 1990s when a small coalition called Save Mountain Island Lake for Everyone was established to protect our region's water quality. It quickly became apparent that this work was critical on a much larger scale, and in 1991 Catawba Lands Conservancy was incorporated as a nonprofit organization to protect the Catawba River Basin.

Since then, the Conservancy's story has been one of dedicated, local families preserving their land, community residents supporting our mission and public and private agencies committing resources to conservation.

**QUICK FACTS**

- Permanently protects more than 7,576 local acres.
- Serves six counties in the Southern Piedmont.
- Partners with nearly 1,100 donors, 375 volunteers and 95 Partners.
- Part of a network of land trusts that conserve land statewide and nationally.
- Each donation of \$200 protects approximately one acre.
- Catawba Lands Conservancy is the lead agency for the Carolina Thread Trail.

**WHAT IS CATAWBA LANDS CONSERVANCY?**

We're a land trust, the only one serving our six county local area. A land trust is a non-profit, community-based conservation organization that permanently conserves and manages land for public benefit. We are on the front lines with local communities, protecting our region's natural heritage.

**HOW DOES THE CONSERVANCY CONSERVE LAND?**

We work with landowners and the community to conserve land by placing voluntary conservation agreements on land, accepting donations of land, occasionally purchasing land, and stewarding conserved land through the generations to come.

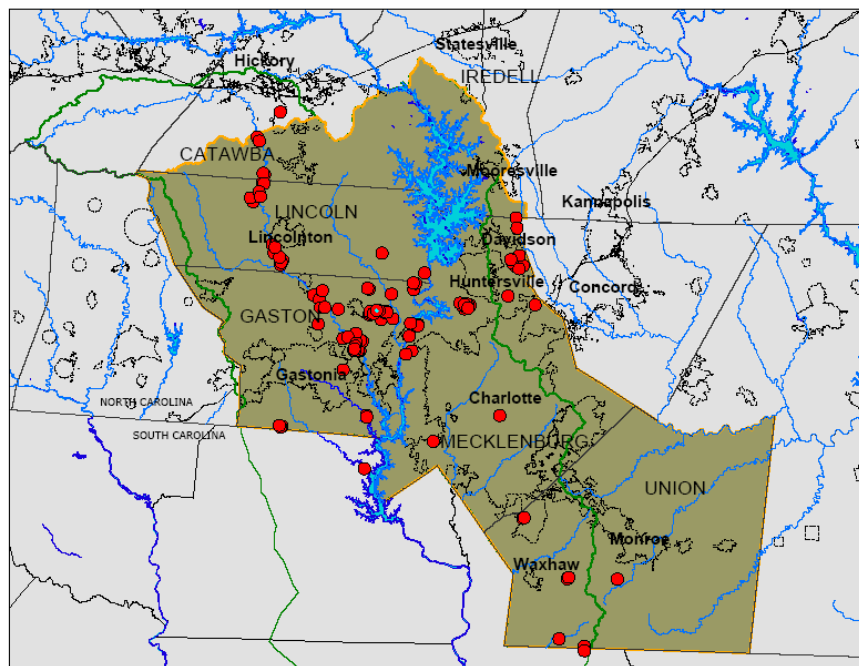
**WHAT IS THE NEED FOR CONSERVATION IN OUR AREA?**

The Charlotte metropolitan area is experiencing growth and considerable development, rapidly changing the character of our communities. An active effort is needed to preserve natural lands for future generations, protect our drinking water and local foods, provide wildlife habitat, and strengthen our communities with places for open space and recreation.

**WHAT CAN I DO TO HELP PROTECT LOCAL NATURAL LANDS?**

Making a donation to the Conservancy is an excellent step to participate in the solution. Whether you're new to the Southern Piedmont or have treasured its landscapes all your life, making a contribution to the Conservancy is a tangible way to permanently preserve our region's natural character. Each donated dollar is leveraged into \$15 to protect sensitive land that safeguards our water and air quality and promotes healthy ecosystems locally.

**LAND PROTECTION AREA**



*Protecting  
Catawba,  
Gaston,  
Iredell,  
Lincoln,  
Mecklenburg,  
and Union  
counties.*

*Conserved  
areas indicated.*

